



# Rugby Free

Primary School

★ Together we learn, together we shine! ★

Newsletter 33

Friday 5<sup>th</sup> June  
2026

## Survey on playtimes

We are looking at our playtimes and thinking about how we can improve them by introducing the Outdoor Play and Learning (OPAL) Primary Programme next academic year.



Can you help? We really want to know what you think of playtimes now.

Follow this link, or the QR code to access a quick survey. Your feedback is incredibly valuable to us!



[https://docs.google.com/forms/d/e/1FAIpQLSdtkdBA0EsPORpleMDkegkMNIMmj\\_3zITW0KabdDGiSxUraFpQ/viewform](https://docs.google.com/forms/d/e/1FAIpQLSdtkdBA0EsPORpleMDkegkMNIMmj_3zITW0KabdDGiSxUraFpQ/viewform)

## Road Safety Reminder for Parents and Carers

We would like to remind all parents, carers and pupils about the importance of road safety during school drop-off and pick-up times.

Recently, concerns have been raised regarding some young children playing in or near the road while waiting to enter school. This behaviour poses a serious safety risk, particularly during busy periods when there is increased traffic around the school site.

We kindly ask parents and carers to supervise their children closely at all times when arriving at and leaving school. Children should remain on the pavement, hold an adult's hand where appropriate, and avoid running, playing or stepping into the road unnecessarily.

We also encourage all members of our school community to set a positive example by using designated crossing points, parking considerately and remaining vigilant around moving vehicles.

By working together, we can help ensure that everyone arrives at school safely and that our school environment remains secure for all pupils, families and staff.

Thank you for your continued support and cooperation.



## My Child At School (MCAS)

As we are nearing the end of the school year, please can we remind you to check yours and your child's MCAS to ensure all contact details we hold are correct.



If you have moved house please ensure you update yours and your child's address. This can be done via the app, each adult with MCAS will need to update their own details.

You are also able to e-mail the school office with changes and we can to update this for you.

**From September, we must have full name, address and contact number for everyone on your contact list. They will not be able to collect your child unless we have those details in case we need to contact them.**

## After School Clubs / Change to normal collection arrangements

Please can we remind you **if your child is not going to after school club that you let us know by 12pm at the very latest** to ensure that we are able to update the register. If you fail to inform us, then your child will need to be collected from the office and not the playground. This will ensure we are able to keep registers updated.

If your child is going home with another child or a different, person who is not on the collection list please let the office know via e-mail with the person's name, address and contact number by 12pm on the day at the very latest.

## Stars of the Week

### Reception

**Giraffes**  
Dhruv & 7  
Sheikh Omar  
**Zebras**  
Aila & Cain

### Year One

**Hedgehogs**  
Davina  
**Rabbits**  
Frank

### Year Two

**Penguins**  
Enzi & Liam  
**Seals**  
Lalana &  
Ambrose &  
Hannah

### Year Three

**Crocodiles**  
Rynat  
**Turtles**  
Katalia

### Year Four

**Bears**  
Jacob  
**Eagles**  
Holly

### Year Five

**Pandas**  
Freddie  
**Tigers**  
Lucas

### Year Six

**Sloths**  
Arya  
**Toucans**  
ly



# Rugby Free

Primary School

★ Together we learn, together we shine! ★

Newsletter 33

Friday 5<sup>th</sup> June  
2026

## Staffing news

Today we are saying goodbye to Miss Dormon, one of our fab Teaching Assistants. Miss Dormon has worked at RFPS for a number of years and is taking on a new position within Speech and Language therapy. We also say goodbye and thank you to one of our lovely teachers, Miss Mac (previously Mrs Costello) who has decided to step away from teaching for a while. We wish them both the very best of luck for their futures and thank them for everything they have done for the school.

Miss Taylor will be starting her maternity leave today and we wish her the very best of luck and hope she loves being a mum! We will see Miss Taylor back with us in Summer 2027. We will miss you but looking forward to your baby news.

Mr Sheehan (Game On Manager) and Miss Dimmock (HLTA) got married during half term! This was a fully RFPS wedding and we are absolutely thrilled for them both. Congratulations Mr and Mrs Sheehan from everyone at RFPS!

Mrs Allen has returned from Maternity Leave, welcome back! Mrs Allen will be taking over from Miss Taylor in Rabbits class for the rest of the academic year.

We are fully staffed with teachers for next year, with Miss Lydiatt returning to RFPS. However, we have an advert out for a Teaching and Learning Assistant who we hope to recruit asap.



## Friends of Rugby Free Primary School (PTA)

**Playground Sales** - 3rd July, this will be weather dependant.

### Easy FundRaising QR

**Code-** A really easy way to fundraise for our school while doing your

shopping on Amazon and many shops at no extra cost to you. The companies donate money! Simply follow the QR link or search for Easyfundraising by Parentkind for more information.



## Eco Team helpers!

Leia from the Eco team and her friend Joanne have been helping out Mr Mcpherson, our premises officer, in looking after our school. They have been litter picking and this week they have been weeding. This is in their own break times. We think this is wonderful and shows our values of collaboration and kindness. Well done team!



LUDIS STUDIIIS

# Rugby Free

Primary School

★ Together we learn, together we shine! ★

Newsletter 33

Friday 5<sup>th</sup> June  
2026

**Diary Dates** (please check every week as they are subject to change!)

**12<sup>th</sup> Jun** – KS2 Sports Day at Diamond Jubilee Athletics Track – parents welcome from 12.50pm for a 1pm start

**16<sup>th</sup> Jun** – Y1 Football festival

**17<sup>th</sup> Jun** – Y2 Football festival

**22<sup>nd</sup> Jun** – Y5 Tudor World trip

**23<sup>rd</sup> Jun** – KS1 (Y1&Y2) Sports Day at school 9.00am

**26<sup>th</sup> Jun** – Y6 Summer Fete Day (children only)

**30<sup>th</sup> Jun** – Rec Sports Day at school 9.00am

**30<sup>th</sup> Jun** – Y2 Coventry Cathedral trip

**1<sup>st</sup> Jul** – Rec British Motor Museum trip

**2<sup>nd</sup> Jul** – Y6 Ninja Warrior trip

**3<sup>rd</sup> Jul** – Friends of RFPS playground sale (end of school day - weather dependent)

**6<sup>th</sup> Jul** – Y5 Residential meeting (Y6 trip) – 5.30pm – Hall entrance

**8<sup>th</sup> July** Transition Day

**9<sup>th</sup> Jul** – Y3 Bosworth Battlefield trip

**9<sup>th</sup> Jul** – Y5 Athletics festival

**10<sup>th</sup> Jul** – Friends of RFPS Break the Rules Day (more details to follow)

**14<sup>th</sup> Jul** – Y4 Cricket festival

**14<sup>th</sup> Jul** – Y6 End of year performance to families (no limit on attendees)- 9.15am

**15<sup>th</sup> July** – Y6 End of year performance to parents & Graduation (2 adults per child only) - 6pm

**20<sup>th</sup> July** – Staff training day (school closed to pupils)

**21<sup>st</sup> July-31<sup>st</sup> Aug** – Summer holidays

**1<sup>st</sup> Sept & 2<sup>nd</sup> Sept** – Staff training days (school closed to pupils)

**3<sup>rd</sup> Sept** – Children return to school for Autumn Term

## Safeguarding

If you are concerned that a child appears unhappy or is being abused act now using the contact numbers provided below or alternatively come in to school and ask to speak to a DSL. Contact the **Warwickshire's Family Connect** on **01926 414144**. Lines are open Monday to Thursday 8am-5.30pm, Friday 8.30am-5.00pm.

If you need to get in touch out of usual office hours, please contact the Emergency Duty Team immediately on **01926 886922**. If you think that a child is at immediate risk, contact the police immediately by dialling **999**.

**SAFEGUARDING**  
Safeguarding our children is everyone's responsibility

If worried about any child being a victim of neglect, abuse or cruelty whilst at RFPS, you must tell Miss Finch or, in her absence, one of her safeguarding team.

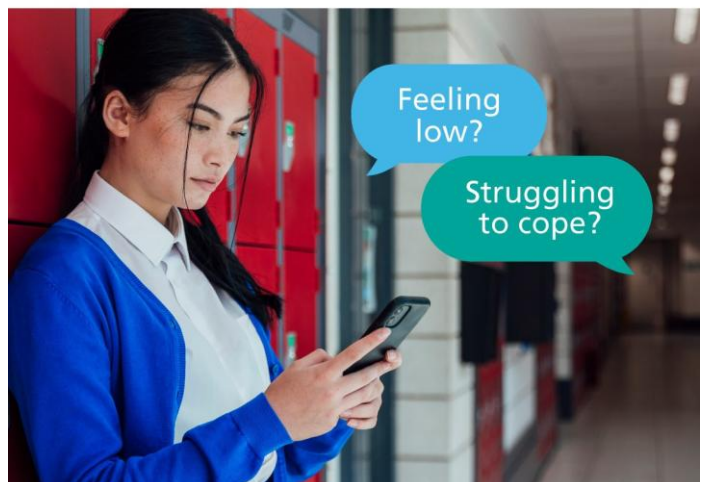
	<b>Miss Finch</b> Designated Safeguarding Lead
	<b>Mrs Colledge</b> Deputy Designated Safeguarding Lead
	<b>Mrs Pollitt</b> Deputy Designated Safeguarding Lead
	<b>Miss Butters</b> Deputy Designated Safeguarding Lead
	<b>Mrs Screen</b> Deputy Designated Safeguarding Lead

Jennifer Beattie  
Trustee for Child Protection & Safeguarding

If you consider a child to be in immediate danger phone the Police on 999 or phone Family Connect on 01926 414144 or out of hours on 01926 886922.

shout  
85258

**NHS**  
Coventry and  
Warwickshire Partnership  
NHS Trust



Text 'CWHOPE' to 85258

Free, confidential, 24/7 text support  
provided by Shout



LUDIS STUDIIS

# Rugby Free

Primary School

★ Together we learn, together we shine! ★

Newsletter 33

Friday 5<sup>th</sup> June  
2026



# BREAK THE RULES DAY

## 10th July

### 50P FINE PER RULE BROKEN

Crazy hair

Tattoos

Odd socks

Bring a cuddly toy

And more

Bring money to school on the day



## The parents' lottery

Support your school with every ticket

£25,000 jackpot!

Support our school



Scan this QR code and enter our school name to join The Parents Lottery



### How does it work?

There will be **guaranteed prizes** up for grabs each week including the chance to win the **£25,000 jackpot!** Keep your eyes on the Friday weekly draw to find out if you'll be a winner this week.



The Parents Lottery is a weekly lottery promoted by Parentkind Enterprises Ltd (PEL, Company no: 1584281), a wholly owned subsidiary of Parentkind. It is run under our remote operating licence (Licence no: 1007004). The Parents Lottery is strictly for only playing a lottery is a form of gambling. If you, or someone you know, needs information or help with a problem gambling, please call the National Gambling Helpline on 0800 8000 155.

Parentkind

The parents' lottery

GambleAware GAMBLING COMMISSION LOTTERIES

LUDIS STUDIIS

Resilience Collaboration Curiosity Respect Kindness Endeavour